

EMERGENCY ACTION PLAN

SURVEILLANCE, WARNING AND EVACUATION PROCEDURES

**WALDEN WOODS DAM
DEP NUMBER D02-117**

**LOCATED ACROSS A TRIBUTARY TO MONTOUR RUN
IN NORTH FAYETTE TOWNSHIP, ALLEGHENY COUNTY**

LATITUDE 40° 26' 40" LONGITUDE -80° 13' 28"

**SIZE CLASSIFICATION "C"
HAZARD POTENTIAL CATEGORY "1"**

**OPERATED BY: NORTH FAYETTE TOWNSHIP
 VICTOR ROGALE,
 PRIMARY OBSERVER
 4 MCKEE STREET
 McDONALD, PA 15057**

**TELEPHONE: BUSINESS: (412) 788-0602
 HOME: (724) 926-8245
 CELL: (412) 812-5831
 E-MAIL: vrogale@north-fayette.com**

**OWNED BY: NORTH FAYETTE TOWNSHIP
 JIM MOROSETTI - CHAIRMAN**

**ADDRESS: 400 NORTH BRANCH ROAD
 OAKDALE, PA 15071**

TELEPHONE: BUSINESS: (412) 788-4888

**DATE: April 30, 2002
REVISED: August 10, 2009**

TABLE OF CONTENTS

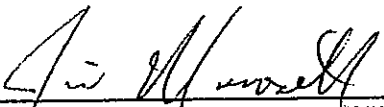
PROMULGATION AND CONCURRENCE	ii
PEMA AND DEP APPROVALS	iii
I. PURPOSE AND SCOPE	1
II. SITUATION	1
III. CONCEPT OF OPERATIONS	1
IV. RESPONSIBILITIES AND DUTIES	4
V. ADMINISTRATION AND LOGISTICS	6
VI. AUTHORITY AND REFERENCES	7
VII. DEFINITIONS	7
VIII. EXERCISE AND TRAINING	10
IX. PLAN MAINTENANCE AND DISTRIBUTION	10

ATTACHMENTS

ATTACHMENT A	INUNDATION MAP	11
ATTACHMENT B	TRAFFIC CONTROL POINTS	12
ATTACHMENT C	LOCATION MAP	13
ATTACHMENT D	TELEPHONE ROSTER	14
ATTACHMENT E	MEDIA ANNOUNCEMENT	15
ATTACHMENT F	NOTICE	16

PROMULGATION AND CONCURRENCE

We, the undersigned, on date indicated, have reviewed the requested support activity in the Emergency Action Plan for the Walden Woods Dam. Our support action will be executed in accordance with existing recommended operating guidelines and existing municipal or county emergency operation plans.



NORTH FAYETTE TOWNSHIP, DAM OWNER
JIM MOROSETTI, CHAIRMAN

8/8/09
DATE



VICTOR ROGALE, DAM OPERATOR

8/9/09
DATE

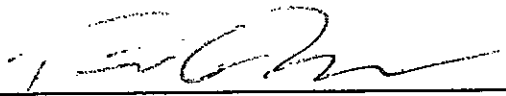


COORDINATOR, ALLEGHENY COUNTY EMA

8/27/09
DATE

PEMA AND DEP APPROVALS

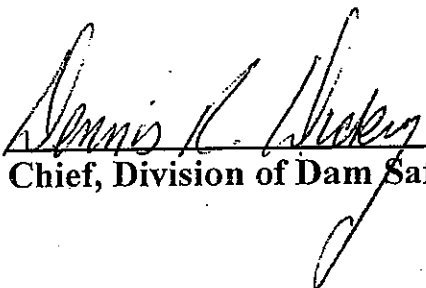
The Pennsylvania Emergency Management Agency approves the Emergency Action Plan for WALDEN WOODS DAM (D02-117).



Director, PEMA Western Area Office

9/28/2008
DATE

The Department of Environmental Protection, Division of Dam Safety, approves the Emergency Action Plan for WALDEN WOODS DAM (D02-117).



Chief, Division of Dam Safety

10/5/09
DATE

I. PURPOSE AND SCOPE

- A. To safeguard the lives as well as to reduce property damage of the citizens living within the dam's potential downstream flood or inundation area.
- B. To provide for effective dam surveillance, prompt notification to local emergency management agencies, citizen warning and evacuation response, when required.
- C. To identify emergency actions to be taken by the dam owner/operator, public officials, emergency personnel, and to outline response actions in the event of a potential or imminent failure of the dam.

II. SITUATION

- A. The dam is a 17-foot high, 200-foot long earthen embankment dam, maintaining no normal pool with a maximum pool capacity of 16.3 acre-feet at the top of the dam. The dam functions as a storm water detention facility, thus under normal conditions the dam will be dry. During significant rainfall events the dam will impound water for a limited time until returning to its normal dry state.
- B. The dam is located along a tributary to Montour Run in the Walden Woods development and lies between Logan Road and Timber Trail in said development. The development is 2 miles west of S.R. 60 at Robinson Town Centre along S.R. 22 and 0.3 miles south of the village of Cliff Mine. Refer to the Location Map at *Attachment C*.
- C. The inundation area resulting from a sudden dam failure compromises the area downstream adjacent to the stream approximately 200' wide and 600' long along Timber Trail and Walden Way. Refer to the Inundation Map at *Attachment A*.
- D. Within the inundation area is a population of approximately 30 residents and 8 homes at 107, 108, 109, 110 Timber Trail and 177, 179, 180, 182 Walden Way. Refer to the Inundation Map at *Attachment A*.

III. CONCEPT OF OPERATIONS

- A. SURVEILLANCE – NORMAL CONDITIONS - (DAM OWNER OR OPERATOR)
 - 1. The dam owner (North Fayette Township – Jim Morosetti - Chairman) or their dam operator (Victor Rogale), or a designated representative will conduct an on-site visual inspection of the dam, the dam's spillway(s), control systems, and the toe area below the dam at a minimum of once every month and after any significant rainfall. Any abnormal or questionable conditions will be immediately brought to the attention of the owner's engineer and the Division of Dam Safety of DEP.
- B. SURVEILLANCE – UNUSUAL EVENT CONDITIONS (DAM WATCH)
 - 1. The dam owner (North Fayette Township – Jim Morosetti - Chairman) or their dam operator (Victor Rogale), or a designated representative will commence surveillance of conditions at the dam site when:

- a. Severe thunderstorms, heavy rains with local flood warnings, tropical storms and hurricanes, or heavy rains with frozen ground and/or snow cover are occurring.
- b. The National Weather Service issues a flash flood watch or warning and conditions warrant.
- c. Any abnormal or questionable conditions as identified in Section III.D.1.

C. EARLY WARNING NOTIFICATION

1. The dam owner (North Fayette Township – Jim Morosetti - Chairman) or their dam operator (Victor Rogale), or a designated representative is responsible for determining the dam's threat potential. The following conditions constitute a dam early warning notification to the Allegheny County PSAP/911 and require 24-hour around-the-clock surveillance.
 - a. The water level in the impoundment area has reached the threshold level of 4 feet below the top of the dam and is rising, or
 - b. Following the occurrence of an earthquake in the general region of the dam.
2. Early warning notification will be relayed from the Allegheny PSAP/911 to the Allegheny County EMC, the PEMA State EOC and all applicable emergency responders and designated government officials and agencies.

D. WARNING AND EVACUATION NOTIFICATION

1. The dam owner (North Fayette Township – Jim Morosetti - Chairman) or their dam operator (Victor Rogale), or a designated representative is responsible for determining the dam's threat potential. The following conditions constitute a dam emergency requiring warning and evacuation notification to the Allegheny County PSAP/911.
 - a. The depth of flow in the emergency spillway has reached a depth of 1 foot. (Staff gage on the spillway might be needed), and
 - b. The water level in the impoundment area has reached the threshold level of 2 1/2 feet below the top the dam, or
 - c. Imminent failure of this dam might be indicated by observance of one or more of the following conditions at the dam site:
 - i. The lake or pond level is at or near the top of the dam and water is flowing, or about to flow, over the top of the dam.
 - ii. The overflow pipe or spillway is damaged, or clogged with debris or ice, which is resulting in a rapid rise in the lake or pond level.
 - iii. The riprap spillway is experiencing heavy flows which are causing severe erosion to the spillway or the dam embankment.

- iv. Any structural movement or failure of the riprap spillway or the spillway slopes.
 - v. Any sloughing or sliding of the embankment upstream or downstream slope. Also, earth slides in the spillway channel, either upstream or downstream of the dam's crest, which could impede the flow in the spillway.
 - vi. Subsidence, sinkholes or cracks found in any part of the dam's embankment or abutting slopes.
 - vii. Any new discharge of water is observed through the dam's embankment or abutting slopes, adjacent to any conduit outlets, or under the dam, which appears as a boil along the downstream toe. Should such a discharge occur and the water is cloudy or muddy in color, then a very serious problem exists.
2. Warning and evacuation notification will be relayed from the Allegheny County PSAP/911 to the Allegheny County EMC, the PEMA State EOC and all applicable emergency responders and designated government officials and agencies.
 3. Emergency management officials will accomplish the needed actions, which are explained in this EAP, in accordance with their existing recommended operating guidelines and existing municipal or county emergency operation plans.
 4. Warning and evacuation of the public must commence upon notification by the dam owner (North Fayette Township – Jim Morosetti - Chairman) or their dam operator (Victor Rogale), or a designated representative of a potential or imminent failure of the dam. Emergency responders should initiate action in accordance with the plan outline and any existing internal organizational recommended operating guidelines, and existing municipal or county operation plans.

E. TERMINATION OF SURVEILLANCE AND NOTIFICATIONS

1. The dam owner (North Fayette Township – Jim Morosetti - Chairman) or their dam operator (Victor Rogale), or a designated representative may terminate 24 - hour surveillance of dam site conditions when:
 - a. All National Weather Service flash flood watches or warnings have expired, **and**
 - b. Heavy rains have ended and the water level in the lake has dropped 5 feet below the top of the dam and is receding.
 - c. After a personal inspection of the dam site has been conducted by a knowledgeable professional engineer following an earthquake, overtopping of the dam or an evacuation of the inundation area as a result of this EAP, or other serious problems resulting in a notification of a dam site emergency and the Department concurs with the results of the inspection.
2. Upon termination of 24 hour surveillance of dam site conditions, the dam owner shall notify the Allegheny County PSAP/911.

3. Termination of notifications will be relayed from the Allegheny County PSAP/911 to the Allegheny County EMC, the PEMA State EOC and all applicable emergency responders and designated government officials and agencies.

IV. RESPONSIBILITIES AND DUTIES - EMERGENCY RESPONSE

A. DAM OWNER OR DAM OPERATOR (DAM SITE EMERGENCY)

1. The dam owner (North Fayette Township – Jim Morosetti - Chairman) or their dam operator (Victor Rogale), or a designated representative will provide for 24-hour on-site dam surveillance and monitoring as required in Section III.C.1. and initiate pre-evacuation notification to the Allegheny County PSAP/911.
2. When the situation meets the criteria under the warning and evacuation notification guidelines, presented in Section III.D.1, indicating a failure of the dam is possible or a significant threat condition is developing, the dam owner (North Fayette Township – Jim Morosetti - Chairman) or their dam operator (Victor Rogale), or a designated representative will initiate warning and evacuation communication to the Allegheny County PSAP/911.

B. ALLEGHENY COUNTY PSAP/911

1. The Allegheny County PSAP/911 will notify:
 - a. Allegheny County EMA
 - b. PEMA State EOC
 - c. North Fayette Township Police
 - d. North Fayette Township Volunteer Fire Department
 - e. North Fayette Township Emergency Medical Services – Northwest EMS

C. ALLEGHENY COUNTY EMA

1. The Allegheny County EMA will contact the following personnel and agencies:
 - a. National Weather Service
 - b. North Fayette Township EMA
 - c. Media - Warning and/or Evacuation (Activate EAS). Refer to Attachment E
 - d. Allegheny County EOC staff, as necessary
 - e. American Red Cross - Pittsburgh Chapter (when mass care or family assistance is required). Coordinate sheltering per ESF 6 of County EOP.
 - f. Allegheny County elected officials
 - g. West Allegheny School District (regarding closure of school bus routes?)
 - h. Pennsylvania Emergency Management Agency
2. The Allegheny County EMA will ascertain and report to PEMA any unmet needs requirements.

3. The Allegheny County EMA will initiate Damage Assessment and Recovery procedures as the situation requires.

D. LOCAL MUNICIPAL EMAs

1. NORTH FAYETTE TOWNSHIP EMA

- a. Advise facilities with special needs individuals as outlined in the Emergency Operations Plan (EOP) and identified by the Hazard Vulnerability Analysis (areas impacted due to a dam failure and indicated on the Inundation Map).
- b. Notify municipal elected officials and municipal services (water, sewer, etc.).
- c. Keep the County EMA apprised of the situation.
- d. Coordinate the evacuation (where appropriate).
- e. Provide damage reporting to the Allegheny County EMC.

E. FIRE DEPARTMENTS

1. NORTH FAYETTE TOWNSHIP VOLUNTEER FIRE DEPARTMENT

- a. Provide citizen notification and route alerting to advise residents living within their jurisdiction (See Inundation Map - Attachment A).
- b. Assist in evacuation.
- c. Assist police and EMS, as requested.
- d. Provide communications support if feasible and requested.

F. POLICE SERVICES

1. NORTH FAYETTE TOWNSHIP POLICE DEPARTMENT

- a. Dispatch radio vehicle to dam site in order to provide alternate communications link to PSAP/911 – North Fayette Township Police Department.
- b. Assist evacuation traffic flow and establish traffic control points (TCP) at pre-designated locations (See Inundation Map – Attachment A and Traffic Control Points – Attachment B).
- c. Prevent unauthorized entry and provide security of evacuated areas.
- d. Provide assistance with route alerting, if requested.

G. EMERGENCY MEDICAL SERVICES (EMS)

1. NORTH FAYETTE TOWNSHIP EMERGENCY MEDICAL SERVICES (EMS) (NORTHWEST EMS)

- a. Provide evacuation transportation assistance and coordinate with designated fire services agencies for transportation of persons with disabilities and any special needs.

- b. Assist fire and police departments as requested.
- c. Provide EMS support to any mass care center as requested.

H. AMERICAN RED CROSS or Volunteer Organization-Active in-Disasters (VOAD)

- 1. PITTSBURGH CHAPTER (If requested by Allegheny County EMA)
 - a. Identify and activate an appropriate shelter, as necessary.
 - b. Support and maintain operations of the reception center.
 - c. Maintain communications with County EMC, local EMA and reception center.

I. NORTH FAYETTE TOWNSHIP ROAD DEPARTMENT

- 1. Provide services, signs, barricades and guidance on roads and bridges affecting the evacuation and recovery.

V. ADMINISTRATION AND LOGISTICS

A. The NOTICE (Attachment F) will be posted in the following public places located within the inundation area:

- 1. North Fayette Township Building
- 2. North Fayette Township Volunteer Fire Department
- 3. Imperial Post Office
- 4. Western Allegheny Community Library
- 5. Walden Woods CSA

B. The NOTICE (Attachment F) must state that copies of the Emergency Action Plan for this dam are available for inspection at the following locations (include physical address):

- 1. Allegheny County Emergency Management Agency Office
400 North Lexington Street
Suite 200
Pittsburgh, PA 15208
- 2. North Fayette Township Emergency Management Office
400 North Branch Road
Oakdale, PA 15071
- 3. North Fayette Township Municipal Building
400 North Branch Road
Oakdale, PA 15071

C. A new NOTICE will be sent to those locations in paragraph "A" when the EAP is revised.

- D. The dam owner is responsible to verify posting of the NOTICE and documenting the status in the annual inspection report.

VI. AUTHORITY AND REFERENCES

A. AUTHORITY

1. The Dam Safety and Encroachments Act (32 P.S. Sections 693.1-693.27), May 16, 1985.
2. The Pennsylvania Code - Title 25, Chapter 105 Dam Safety and Waterways Management, Section 105.63 and 105.134.
3. Emergency Management Services Code, 35 Pa C.S. Section 7101 et seq., as amended.

B. REFERENCES

1. Guidelines for Developing an Emergency Action Plan for Hazard Category 1 & 2 Dams. Prepared by the Department of Environmental Protection, Water Management, Bureau of Waterways Engineering, Division of Dam Safety and the Pennsylvania Emergency Management Agency, January 2009.
2. Inspection, Maintenance and Operation of Dams in Pennsylvania. Prepared by the Department of Environmental Protection, Water Management, Bureau of Waterways Engineering, Division of Dam Safety, February 2009.
3. Allegheny County Emergency Operations Plan.

VII. DEFINITIONS

- A. **ABUTMENT** - The part of the valley's hillside against which the dam abuts. Right and left abutments are those on respective sides of the dam as an observer looks downstream.
- B. **AFFECTED COUNTIES/MUNICIPALITIES** - Those jurisdictions within Pennsylvania or adjoining states that, according to the inundation map, may experience flooding as a result of a failure of the dam.
- C. **BOIL** - A disturbance in the surface layer of soil caused by water escaping under pressure from behind a water-retaining structure such as a dam or a levee. The boil may be accompanied by deposition of soil particles (usually sand or silt) in the form of a ring (miniature volcano) around the area where the water escapes.
- D. **BREACH** - An opening or a breakthrough of a dam sometimes caused by rapid erosion of a section of earth embankment by water.
- E. **CONDUIT** - A pipe used to convey water through or around or under a dam.
- F. **CONTROL TOWER** - A structure in the dam or reservoir used to control withdraw of water from the reservoir through pipes or culverts.
- G. **CREST OF DAM** - The crown of an overflow section of the dam. In the United States, the term "crest of dam" is often used when "top of dam" is intended. To avoid confusion, the terms **crest of spillway** and **top of dam** should be used for referring to the overflow section and dam proper, respectively.

- H. **CULVERT** - (a) A drain or waterway structure built transversely under a road, railway, or embankment. A culvert usually comprises a pipe or a covered channel of box section. (b) A gallery or waterway constructed through any type of dam, which is normally dry but is used occasionally for discharging water; hence the terms scour culvert, draw off culvert and spillway culvert.
- I. **DAM** - A barrier built across a watercourse for impounding or diverting the flow of water.
- J. **DAM FAILURE** - The uncontrolled release of a dam's impounded water. It is recognized that there are degrees of failure. Any malfunction or abnormality, outside the design assumptions and parameters, which adversely affect a dam's primary function of impounding water, is properly considered a failure. Minor malfunctions or abnormalities can result in a sudden failure of a dam.
- K. **EARTH DAM (EARTHFILL DAM)** - An embankment dam in which more than 50% of the total volume is formed of compacted fine-grained earth.
- L. **EMBANKMENT** - Fill material, usually earth or rock, placed with sloping sides.
- M. **EMERGENCY** - A condition of serious nature which develops unexpectedly and endangers the structural integrity of a dam or endangers downstream property and human life. An emergency requires immediate action.
- N. **EAP** - Emergency Action Plan - A formal document that identifies potential emergency conditions at a dam and specifies preplanned actions to be followed to minimize property damage and loss of life. It contains procedures and information to assist the dam owner in issuing early warning and notification messages to responsible downstream emergency management authorities of the emergency situation. It also contains inundation maps to show the emergency management authorities of the critical areas for action in case of an emergency.
- O. **EOP** - Emergency Operations Plan - "The document ... which describes the hazards, vulnerabilities, emergency management situations and assumptions that affect the municipality, the concept of operations during an emergency, and the various roles and assignments of the elected officials, emergency management coordinator and other emergency response personnel, whether paid or volunteer." (From PEMA Directive D2007-1). The EOP includes checklists for known critical facilities, special facilities, critical personnel, hearing impaired residents, non-English speaking residents, residents requiring ambulance assistance, etc., as identified by local emergency management officials.
- P. **FACE** - With reference to a structure, the external surface that limits the structure, e.g., the face of a wall or dam.
- Q. **FAILURE** - An incident resulting in the uncontrolled release of water from an operating dam. See "Dam Failure".
- R. **FOUNDATION OF DAM** - The natural material on which the dam structure is placed.
- S. **GROIN** - That area along the contact (or intersection) of the face of a dam with the abutment.
- T. **HAZARD** - A situation which creates the potential for adverse consequences such as loss of life, property damage, and adverse social and environmental impacts. Impacts may be for a defined area downstream of a dam from flood-waters released through spillways and outlet works of the dam or waters released by partial or complete failure of the dam. This could include an area upstream of the dam from effects of backwater flooding or effects of landslides around the reservoir perimeter.

- U. **INUNDATION AREA** - The downstream area that would be flooded or otherwise affected by the failure of a dam or large flows. This area can be subject to a fast moving flood wave, 20 to 50 MPH is common, with a height of 1 foot to tens of feet.
- V. **INUNDATION MAP** - A map delineating the area that would probably be flooded in the event of a dam failure. This map must be prepared by a registered professional engineer.
- W. **NOTIFICATION** - To promptly inform appropriate individuals or emergency agency about an emergency condition so they can initiate appropriate actions.
- X. **NORMAL WATER LEVEL (NORMAL WATER POOL)** - For reservoir with a fixed overflow spillway crest, it is the lowest level of that crest.
- Y. **OPERATOR** - The person or position in a company or organization, who is responsible for a dam's operation and surveillance.
- Z. **OUTLET** - A constructed opening through which water can be safely discharged for a particular purpose from a reservoir.
- AA. **OWNER** - Any person, authority or agency that manages a dam or reservoir.
- BB. **PSAP** - Public Safety Answering Point - an agency in the United States, typically county or city controlled, responsible for answering 9-1-1 calls for emergency assistance from police, fire, and ambulance services.
- CC. **RIPRAP** - rubble, shot rock or rock armour — is rock or other material used to armor shorelines, streambeds, bridge abutments, pilings and other shoreline structures against scour, water or ice erosion.
- DD. **SEEPAGE** - The movement of water that might occur through the dam, its foundation or its abutments. Small amounts of clear water seepage is normal. Increase in the amount of water flow or change in color is a concern for a dam's safety.
- EE. **SLIDE** - The movement of a mass of earth down a slope. In embankments and abutments, this involves the separation of a portion of the slope from the surrounding materials.
- FF. **SPILLWAY** - A structure over or through which flows are discharged. If the flow is controlled by gates, it is considered a controlled spillway; if the elevation of the spillway crest is the only control, it is considered an uncontrolled spillway.
- GG. **SPILLWAY CHANNEL** - A channel conveying water from the spillway crest to the river downstream.
- HH. **TOE OF DAM** - The junction of the downstream face of a dam with the ground surface. Also referred to as downstream toe. For an embankment dam, the junction of the upstream face with ground surface is called the upstream toe.
- II. **TOP OF DAM** - The elevation of the uppermost surface of a dam, usually a road or walkway, excluding any parapet wall, railings, etc.
- JJ. **TRAFFIC CONTROL POINT (TCP)** – Manned or unmanned posts established at critical road junctions for the purpose of controlling or limiting traffic. TCPs are used to control evacuation movement and also limit entry into the inundation area when an emergency situation requires it.
- KK. **VOAD** - Voluntary Organizations Active in Disasters - collaboration of diverse organizations and citizens trained to meet community needs in the wake of a large-scale disaster.

VIII. EXERCISE AND TRAINING

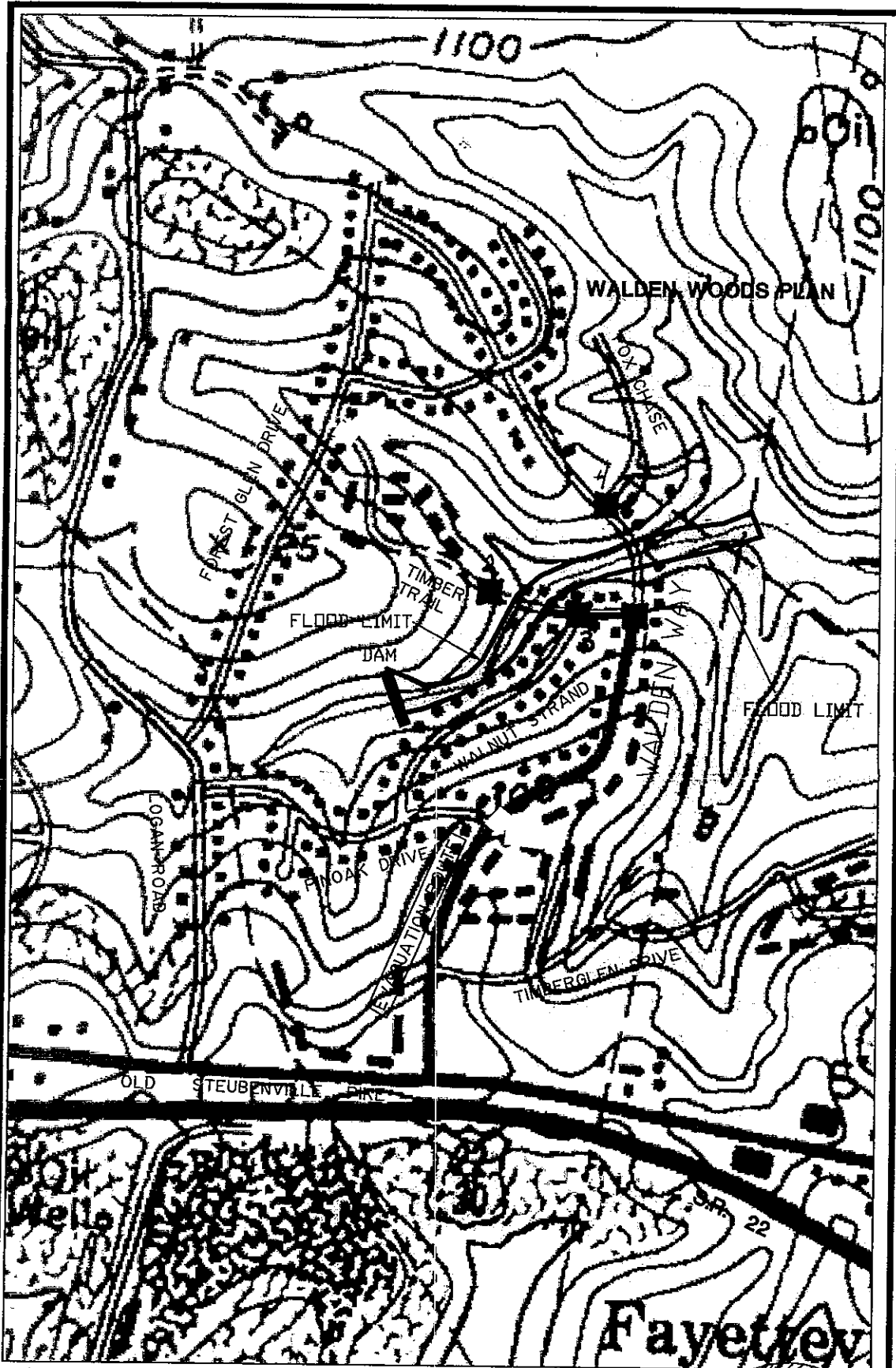
The dam owner will advise and cooperate with the Allegheny County EMA of any exercises scheduled, and coordinate with the Allegheny County EMA to exercise all or portions of this EAP as part of the county's all-hazard exercise program schedule.

IX. PLAN MAINTENANCE AND DISTRIBUTION

- A. This EAP will be reviewed every five years by the owner or the owner's engineer. During the five year review:
1. The owner or the owner's engineer will conduct an on-site review of the flood (inundation) area for any increase in downstream development and revise the Inundation Map, if needed.
 2. The owner's engineer will review and revise surveillance conditions as needed.
 3. The owner will coordinate with Allegheny County EMA if population increase or development within the inundation area could affect the emergency response requirements. If so, a new or revised plan must be developed.
 4. The owner will meet with and obtain concurrence from the affected county PSAP/911 Center(s) and EMC(s).
 5. The owner will submit 6 copies at a minimum of the revised plan to DEP for review and approval.
- B. A copy of the approved EAP will be distributed by the dam owner to those emergency response agencies listed in Section IV. DEP, Division of Dam Safety will distribute a copy of the approved EAP to PEMA's Area Office, the affected county Emergency Management Agency(s) and PSAP/911 Center(s), the National Weather Service, and the DEP's Regional Office. Within 60 days, the dam owner will submit a letter certifying distribution of the approved EAP and posting of NOTICE(s) to the DEP, Division of Dam Safety.

ATTACHMENTS:

- ATTACHMENT A** INUNDATION MAP
- ATTACHMENT B** TRAFFIC CONTROL POINTS
- ATTACHMENT C** LOCATION MAP
- ATTACHMENT D** TELEPHONE ROSTER
- ATTACHMENT E** MEDIA ANNOUNCEMENT
- ATTACHMENT F** NOTICE



Fayette



ATTACHMENT A

WALDEN WOODS DAM (D02-117)

DAM INUNDATION MAP

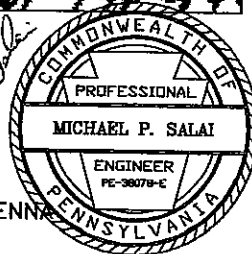
SITUATE

NORTH FAYETTE TOWNSHIP - ALLEGHENY COUNTY - PENN.

SCALE: 1"=500'

DATE: 03-31-02

Michael P. Salai

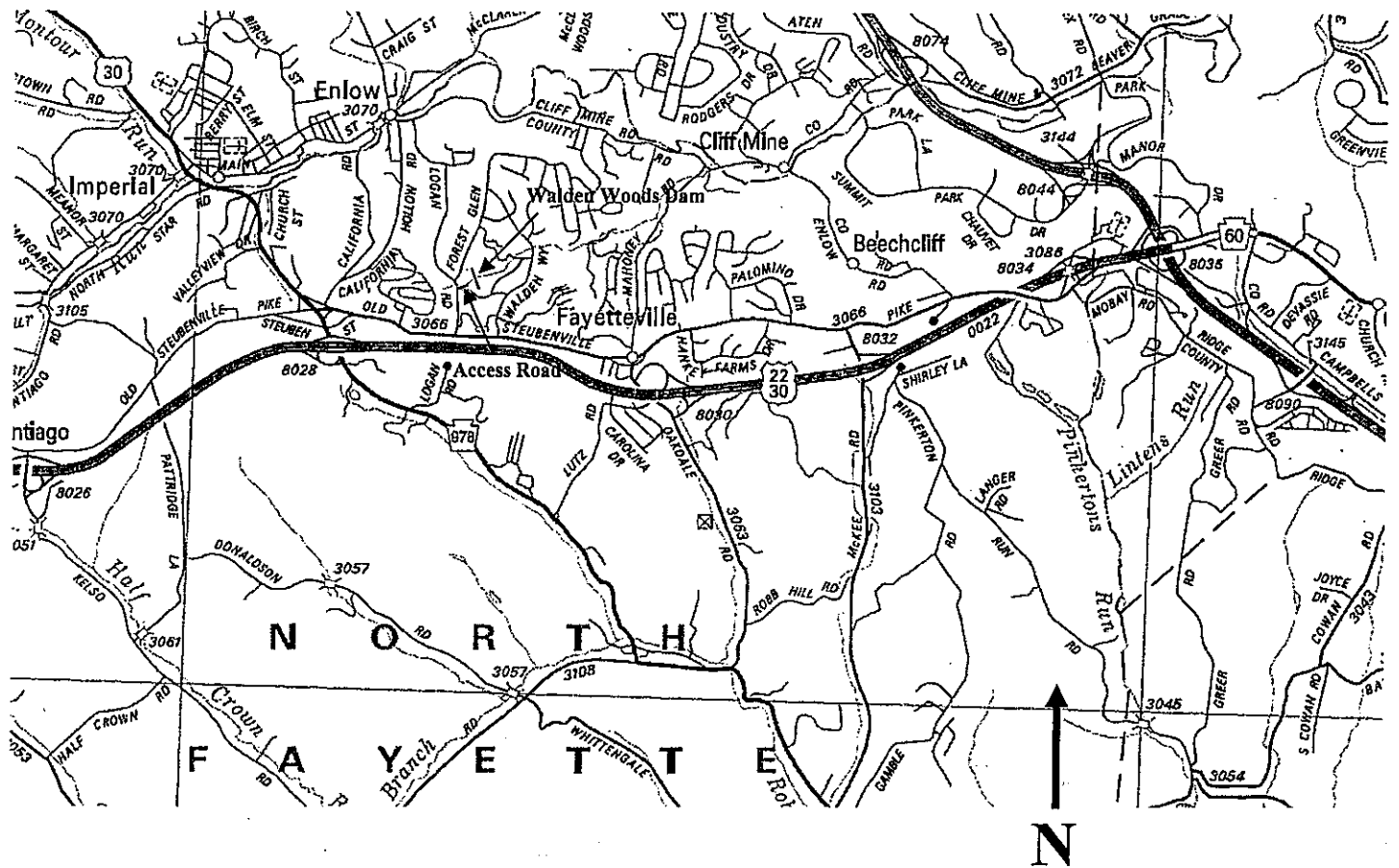


ATTACHMENT B

TRAFFIC CONTROL POINTS

- TCP-1 North Fayette Township Police Department
At intersection of Walden Way and Timber Trail
- TCP-2 North Fayette Township Police Department
500' South East on Timber Trail from Forest Glen
- TCP-3 North Fayette Township Police Department
At intersection of Walnut Strand and Timber Trail
- TCP-4 North Fayette Township Police Department
At intersection of Walden Way and Fox Chase

ATTACHMENT C LOCATION MAP



DIRECTIONS:

From Pittsburgh – Parkway West (I-279) to US 22-30 (3.7 miles from I-79). Take Rout 22-30 to the Hankey Farms Exit. Make a right turn onto Oakdale Road and go ¼ mile to Old Steubenville Pike. At the traffic signal make a left turn onto Old Steubenville Pike. Go 0.8 miles to Logan Road. Make a right onto Logan Road. Go 0.24 miles to dam access road on the right.

ATTACHMENT D TELEPHONE ROSTER

NON-EMERGENCY EMERGENCY

DAM OWNER: NORTH FAYETTE TWP.	412-788-4888	412-787-8900
DAM OPERATOR: VICTOR ROGALE	412-788-4888	724-926-8245
ALLEGHENY COUNTY PSAP/911	412-473-3000	911
ALLEGHENY COUNTY EMA	412-473-2550	911
DEP - SOUTHWEST REGION	412-442-4187	412-442-4000 (24 HR.) 877-333-1904
DEP - DIVISION OF DAM SAFETY	717-787-8568	717-787-4343 (24 HR.) 800-541-2050
PEMA	717-651-2001 800-424-7362	717-651-2001 (24 HR.) 800-424-7362
NORTH FAYETTE TOWNSHIP EMA	724-693-8400	724-693-8400
NORTH FAYETTE TOWNSHIP POLICE	724-693-8400	724-693-8400
NORTH FAYETTE TOWNSHIP VFD	412-473-3000	911
NORTHWEST EMS	412-761-2200	911
WEST ALLEGHENY SCHOOL DISTRICT	724- 695-3422	724-787-1213 (Jerry Wessel)

ATTACHMENT E

MEDIA ANNOUNCEMENT

EARLY WARNING MESSAGE:

The ALLEGHENY County Emergency Management Agency advises that due to conditions at the WALDEN WOODS Dam in NORTH FAYETTE TOWNSHIP, the public should avoid the area downstream of the dam along Timber Trail and Walden Way. Stay tuned for further information.

REPEAT PERIODICALLY

WARNING AND EVACUATION MESSAGE:

The ALLEGHENY County Emergency Management Agency is advising all residents living downstream of the WALDEN WOODS Dam in NORTH FAYETTE TOWNSHIP to evacuate the area immediately. Evacuate the area downstream along Timber Trail and Walden Way. If you require shelter during this emergency you should report to (location of reception/mass care center to be determined by county EMC, American Red Cross or other VOAD at time of emergency).

REPEAT PERIODICALLY

INCIDENT RESOLVED - SAFE TO RETURN:

The ALLEGHENY County Emergency Management Agency is advising residents of the area downstream of the WALDEN WOODS Dam in NORTH FAYETTE TOWNSHIP that the problem at the dam has been resolved and that residents may return to their homes.

REPEAT PERIODICALLY

NOTE: The above messages should be modified as necessary to fit the situation.

ATTACHMENT F

NOTICE

WALDEN WOODS DAM HAS BEEN CLASSIFIED BY THE DEPARTMENT OF ENVIRONMENTAL PROTECTION, DIVISION OF DAM SAFETY, AS A HIGH HAZARD DAM; THIS IS A DAM SO LOCATED AS TO ENDANGER POPULATED AREAS DOWNSTREAM BY ITS FAILURE.

AN EMERGENCY ACTION PLAN HAS BEEN DEVELOPED FOR

WALDEN WOODS DAM

(NAME OF DAM)

A COPY OF THIS PLAN, INCLUDING AN INUNDATION MAP NOTING AREAS IN

NORTH FAYETTE TOWNSHIP

(NAME OF MUNICIPALITY AND/OR MUNICIPALITIES)

SUBJECT TO FLOODING IN THE EVENT OF FAILURE, IS AVAILABLE FOR PUBLIC INSPECTION AT THE FOLLOWING LOCATIONS:

**NORTH FAYETTE TOWNSHIP
400 NORTH BRANCH ROAD
OAKDALE, PA 15071
(DAM OWNER & ADDRESS)**

**NORTH FAYETTE TOWNSHIP EMA OFFICE
400 NORTH BRANCH ROAD
OAKDALE, PA 15071
(LOCAL EMA OFFICE & ADDRESS)**

**ALLEGHENY COUNTY EMA OFFICE
400 NORTH LEXINGTON STREET
SUITE 200
PITTSBURGH, PA 15208
(COUNTY EMA OFFICE & ADDRESS)**

This NOTICE is posted per Department of Environmental Protection's Chapter 105 Dam Safety and Waterway Management §105.134(c).